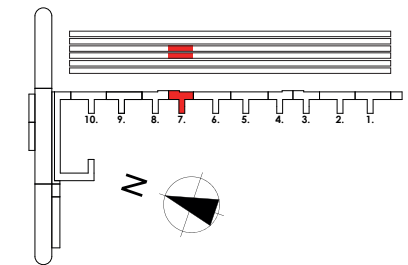


## HAUS Hiddensee, Aufgang 7 Wohnung 3.2 | 3.+2.OG



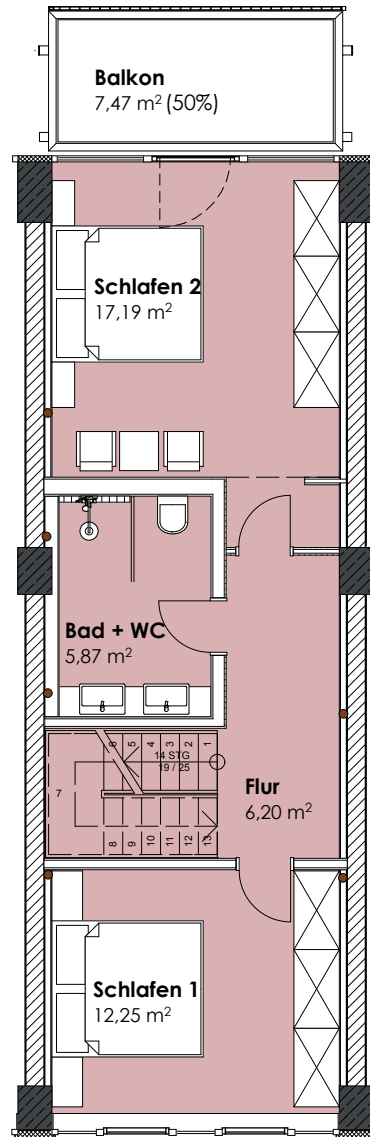
<b>3.2</b>	<b>WE 3.2</b> 3 + 2.OG 89,68 m <sup>2</sup>
------------	---

### 2. OG

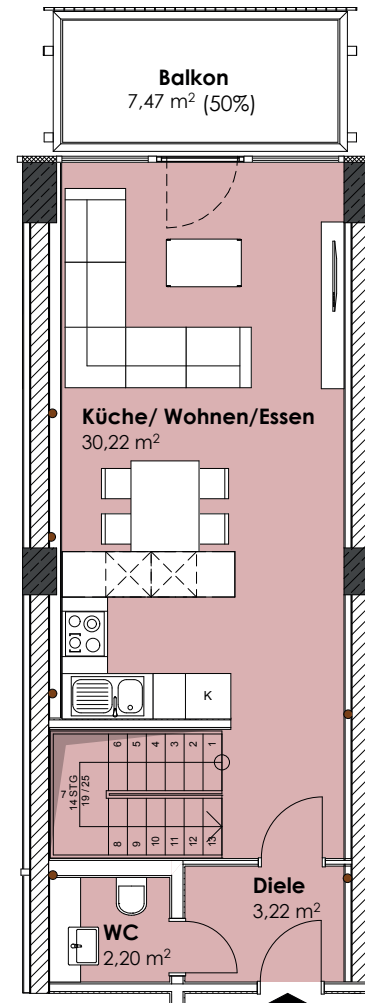
Schlafen 1 m <sup>2</sup>	12,25
Schlafen 2 m <sup>2</sup>	17,19
Flur m <sup>2</sup>	6,20
Bad + WC m <sup>2</sup>	5,87
Balkon m <sup>2</sup> Faktor 0,50 von 7,47 m <sup>2</sup>	3,74
Abstellraum 3.2 m <sup>2</sup>	5,05

### 3. OG

Diele m <sup>2</sup>	3,22
WC m <sup>2</sup>	2,20
Wohnen/Essen/Küche m <sup>2</sup>	30,22
Balkon m <sup>2</sup> Faktor 0,50 von 7,47 m <sup>2</sup>	3,74



2. Obergeschoss



3. Obergeschoss

**WE 3.2**  
89,68 m<sup>2</sup>

