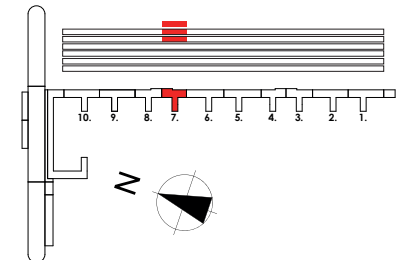
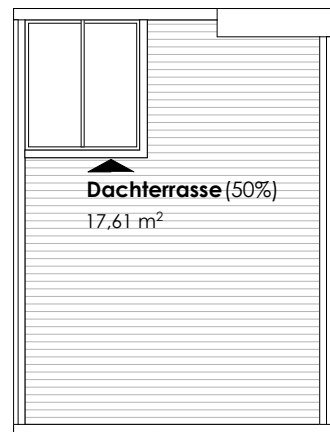


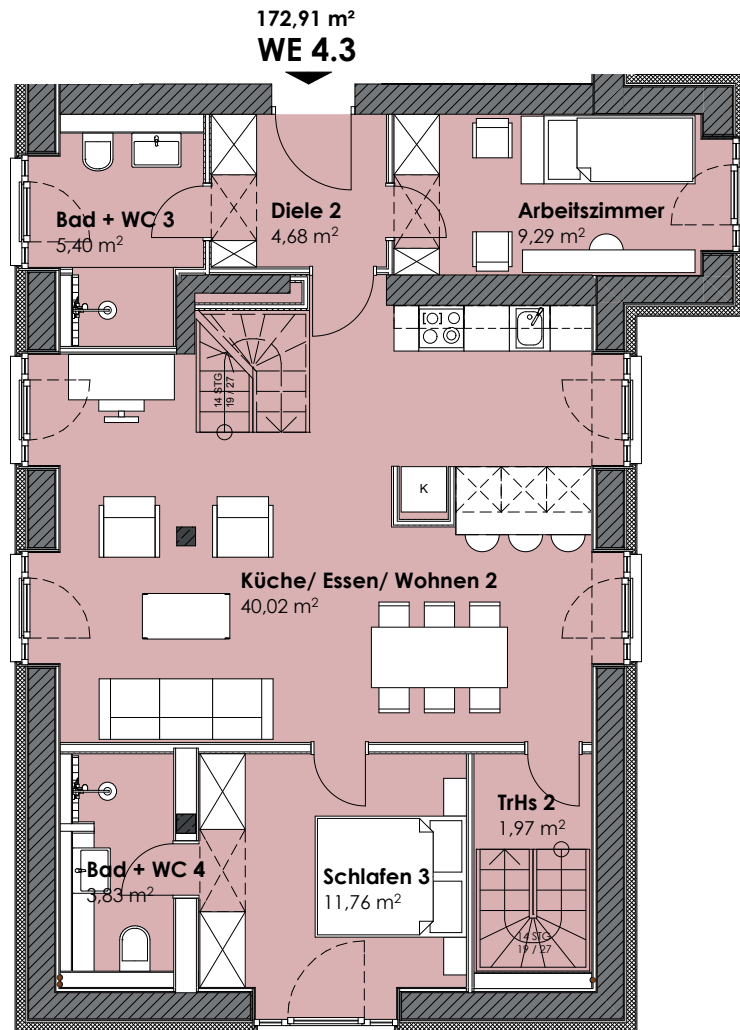
HAUS Hiddensee, Aufgang 7
Wohnung 4.3 | 4. + 5.OG + DG



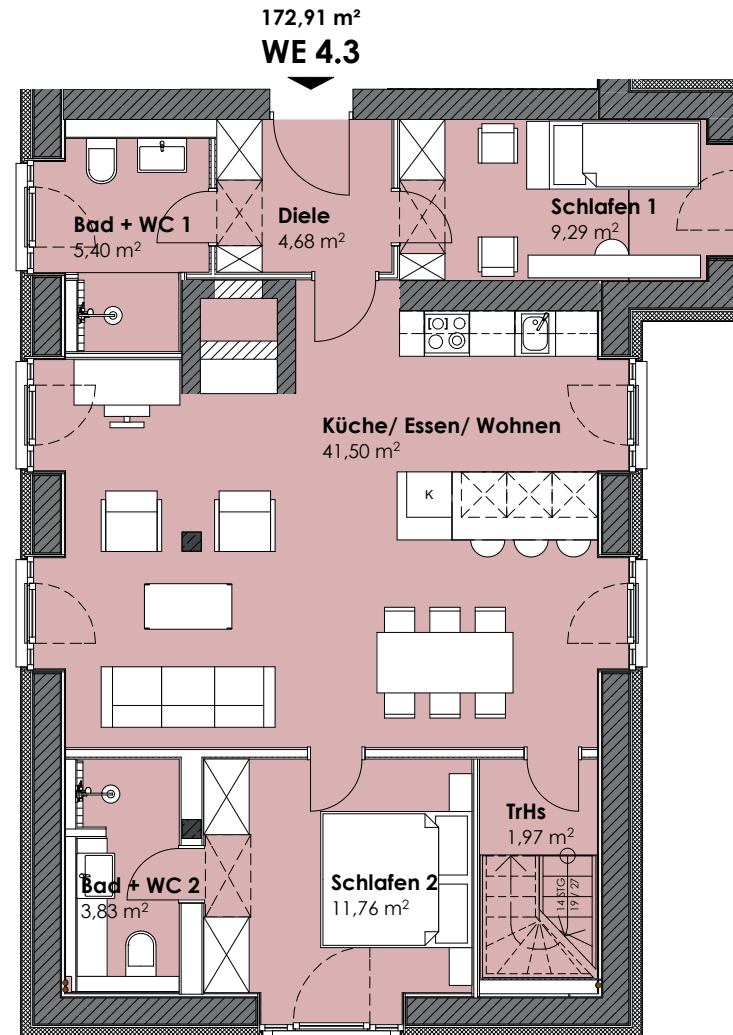
WE 4.3
4.+ 5.OG + DG
172,91 m²



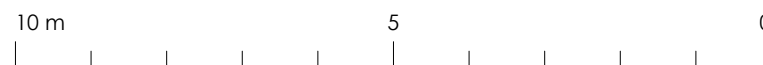
Dachterrasse (50%)
17,61 m²



5. Obergeschoss



4. Obergeschoss



4.OG	
Diele m ²	4,68
Wohnen/ Küche/ Essen m ²	41,25
Bad/ WC 1 m ²	5,40
Bad/ WC 2 m ²	3,83
Schlafen 1 m ²	9,29
Schlafen 2 m ²	11,76
Abstellraum 4.3 m ²	8,97
TrHs 1 m ²	1,97
5.OG	
Diele m ²	4,68
Wohnen/ Küche/ Essen m ²	40,02
Bad/ WC 3 m ²	5,40
Bad/ WC 4 m ²	3,83
Schlafen 3 m ²	9,29
Schlafen 4 m ²	11,76
TrHs 2 m ²	1,97
DG	
Dachterrasse m ² Faktor 0,50 von 17,61 m ²	8,81