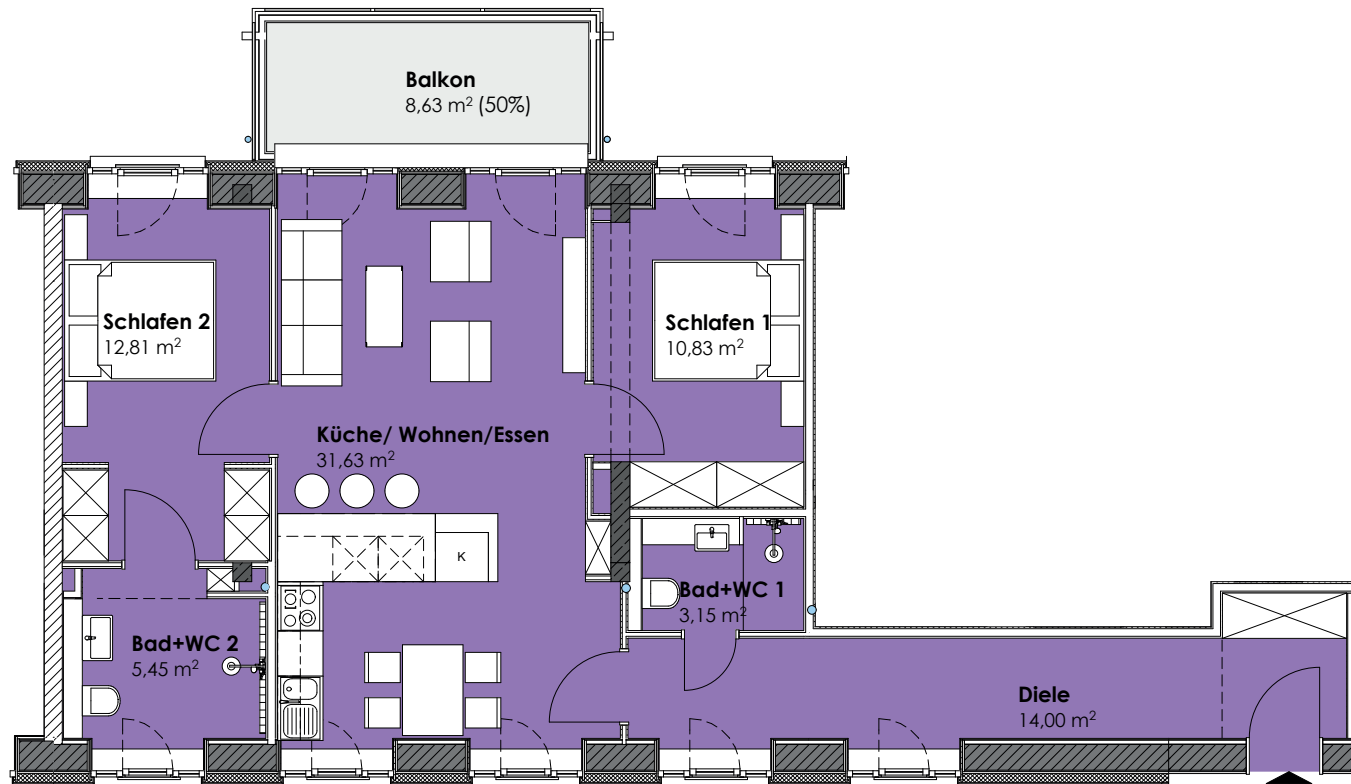
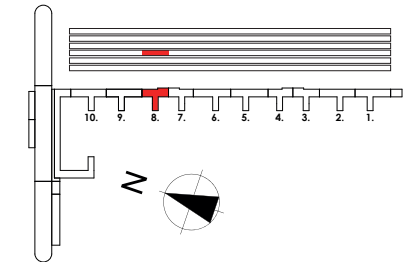


HAUS Jasmund, Aufgang 8
Wohnung 2.1 | 2. OG



WE 2.1
88,07 m²

2. Obergeschoss



2.1	WE 2.1 2.OG 88,07 m²
------------	-----------------------------------

2. OG	
Diele m²	14,00
Wohnen/ Küche/Essen m²	31,63
Bad/WC 1m²	3,15
Bad/ WC 2m²	5,45
Schlafen 1 m²	10,83
Schlafen 2 m²	12,81
Abstellraum 2.1 m²	5,88
Balkon m² Faktor 0,50 von 8,63 m²	4,32