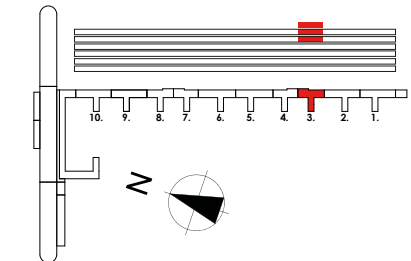
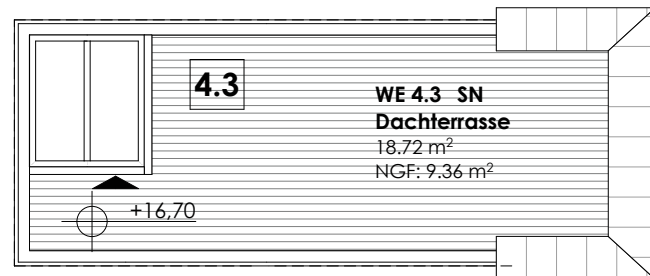


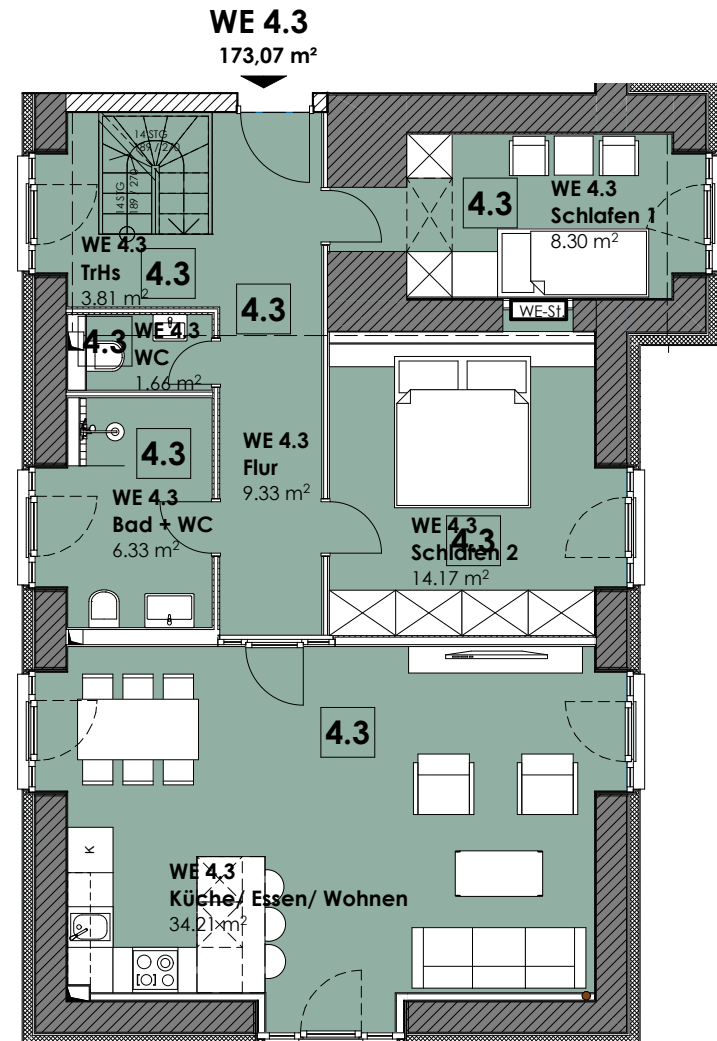
HAUS Wittow, Aufgang 3
Wohnung 4.3 | 4.OG+5.OG+DG



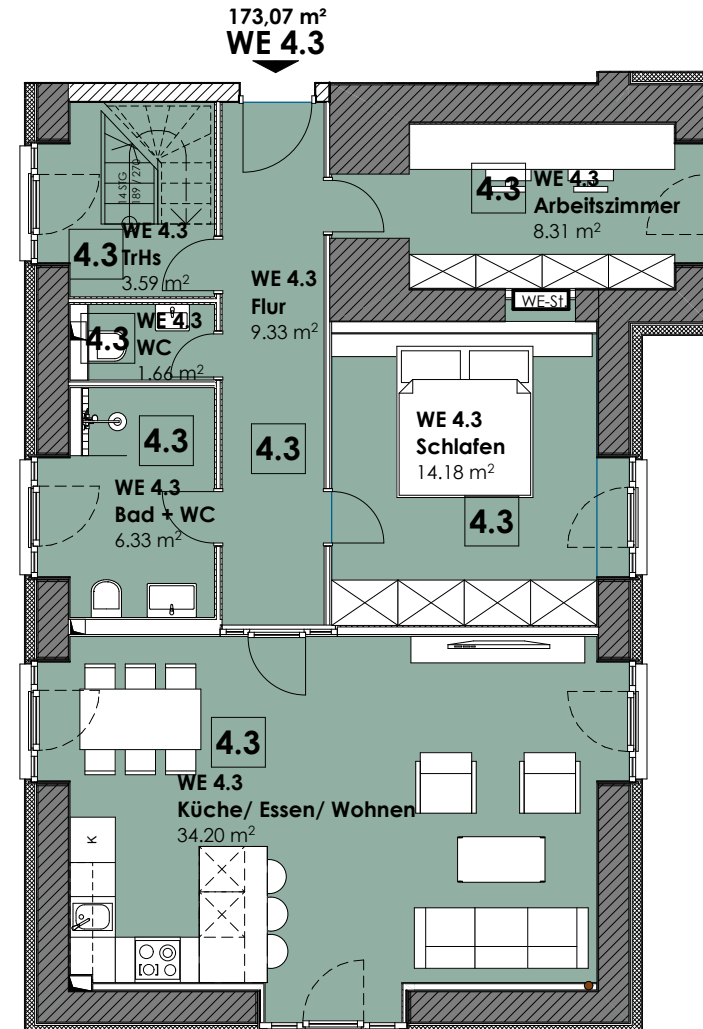
WE 4.3
4.OG+5.OG+DG
173,07 m²



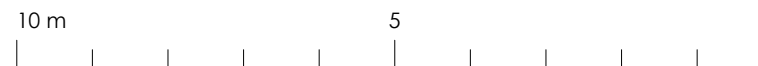
Dachterrasse



5. Obergeschoss



4. Obergeschoss



4. OG	
Arbeitszimmer m ²	8,31
Bad + WC 1 m ²	6,33
WC 1 m ²	1,66
Flur 1 m ²	9,33
Schlafen m ²	14,18
Küche/Essen/Wohnen m ²	34,20
TrHs 1 m ²	3,59
Abstellraum 2.OG m ²	8,30
5. OG	
Bad + WC 2 m ²	6,33
Flur m ²	9,33
Schlafen 1 m ²	8,30
Schlafen 2 m ²	14,17
Küche/Essen/Wohnen 2 m ²	34,21
TrHs 2 m ²	3,81
WC 2 m ²	1,66
5. OG	
Dachterrasse m ² Faktor 0,50 von 18,72 m ₂	9,36