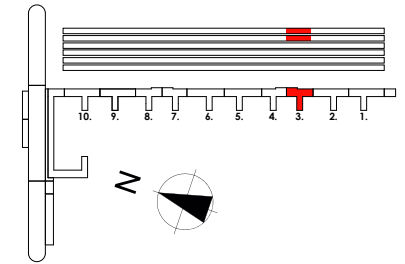
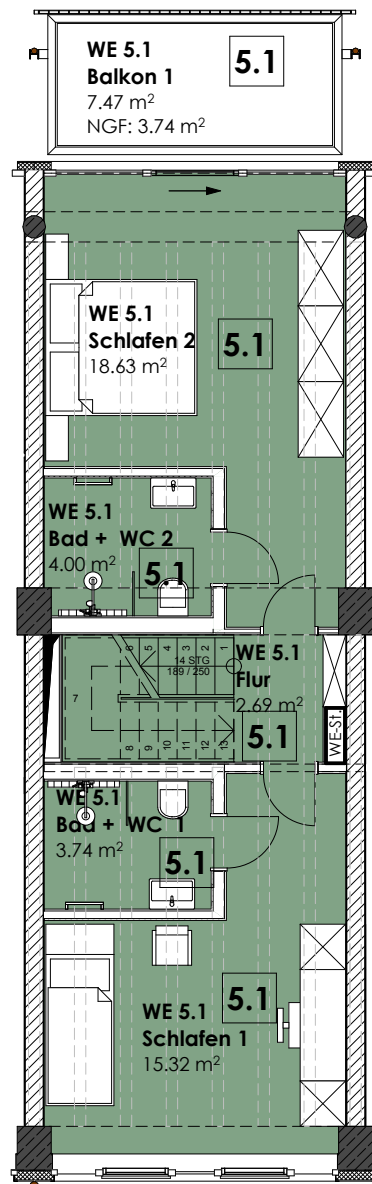


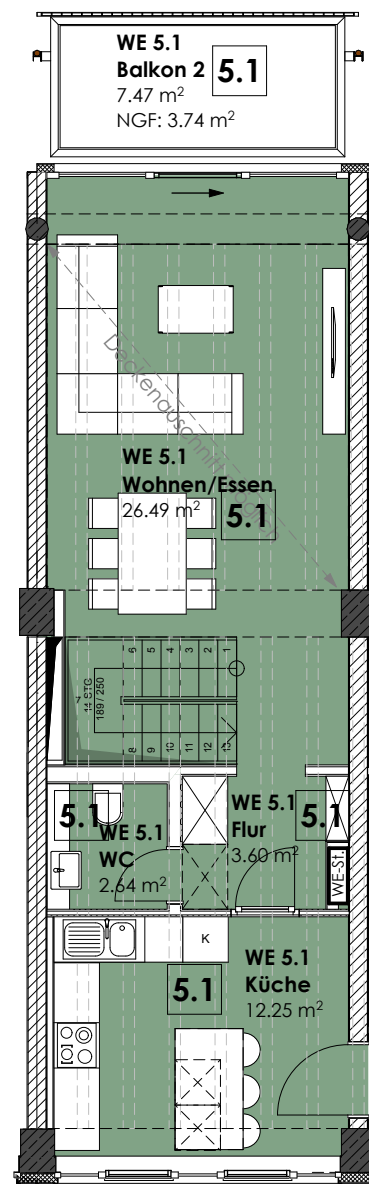
**HAUS Wittow, Aufgang 3**  
Wohnung 5.1 | 4.OG + 5.OG



**T** WE 5.1  
4.OG + 5.OG  
106,04 m<sup>2</sup>



4. Obergeschoss



5. Obergeschoss



WE 5.1  
106,04 m<sup>2</sup>

4. OG	
Flur m <sup>2</sup>	2,69
Bad + WC 1 m <sup>2</sup>	3,74
Bad + WC 2 m <sup>2</sup>	4,00
Schlafen 1 m <sup>2</sup>	15,32
Schlafen 2 m <sup>2</sup>	18,63
Balkon m <sup>2</sup>	7,47
Faktor 0,50 von 3,74 m <sup>2</sup>	
5. OG	
Flur m <sup>2</sup>	3,60
Küche m <sup>2</sup>	12,25
Wohnen/Essen m <sup>2</sup>	26,49
WC m <sup>2</sup>	2,64
Abstellraum 2.OG m <sup>2</sup>	9,22
Balkon m <sup>2</sup>	7,47
Faktor 0,50 von 3,74 m <sup>2</sup>	