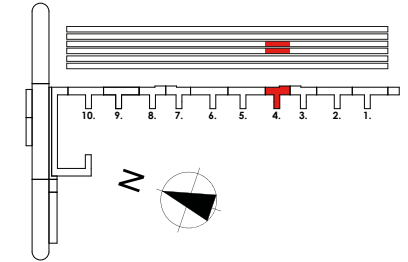
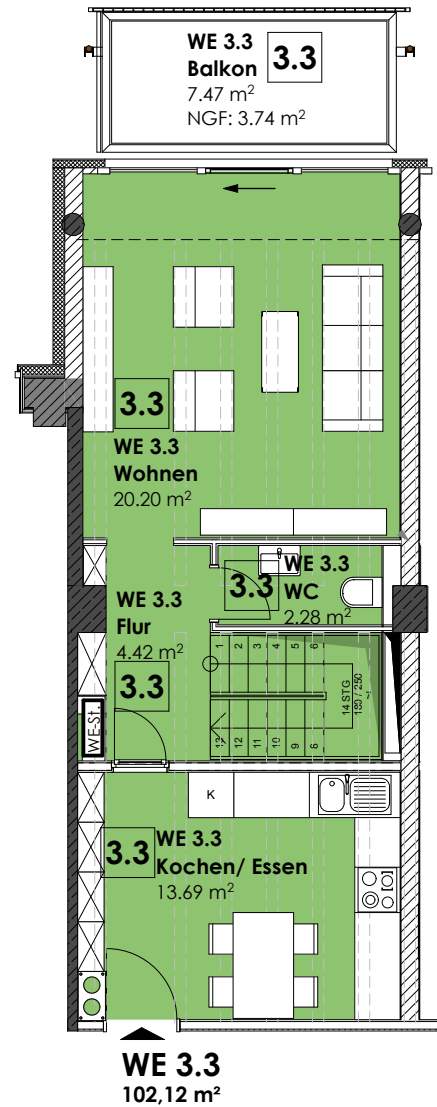


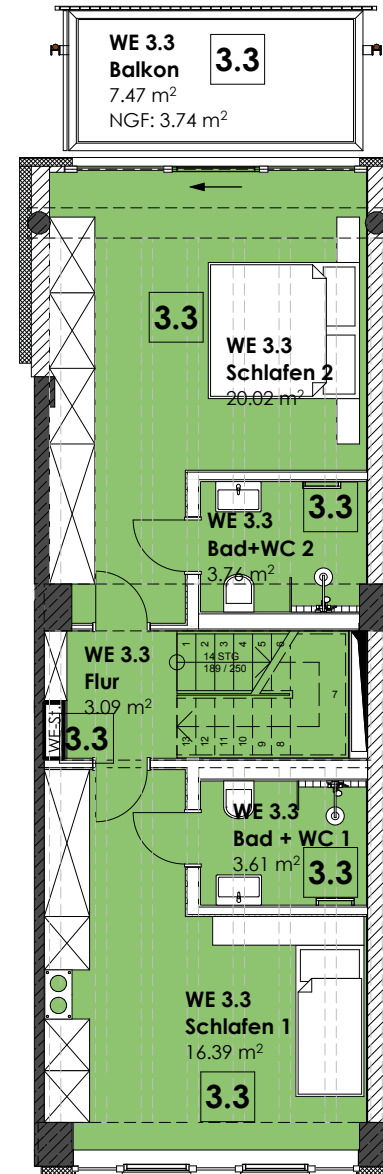
**HAUS Zudar, Aufgang 4**  
**Wohnung 3.3 | 2.OG + 3.OG**



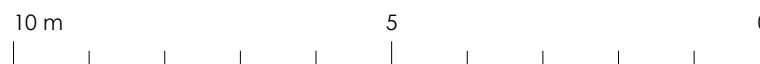

**WE 3.3**  
**2.OG + 3.OG**  
**102,12 m<sup>2</sup>**



**3.Obergeschoss**



**2.Obergeschoss**



2. OG	
Flur m <sup>2</sup>	3,09
Bad + WC 1 m <sup>2</sup>	3,61
Bad + WC 2 m <sup>2</sup>	3,76
Schlafen 1 m <sup>2</sup>	16,39
Schlafen 2 m <sup>2</sup>	20,02
Balkon m <sup>2</sup> Faktor 0,50 von 3,75 m <sup>2</sup>	7,47
3. OG	
Flur m <sup>2</sup>	4,40
Kochen/Essen m <sup>2</sup>	13,69
WC m <sup>2</sup>	2,28
Wohnen m <sup>2</sup>	20,20
Abstellraum 1.OG m <sup>2</sup>	7,23
Balkon m <sup>2</sup> Faktor 0,50 von 3,75 m <sup>2</sup>	7,47