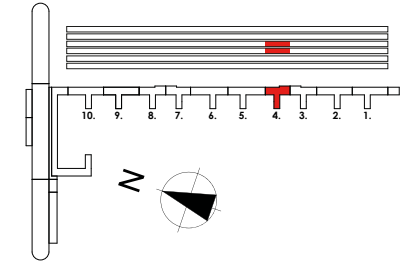
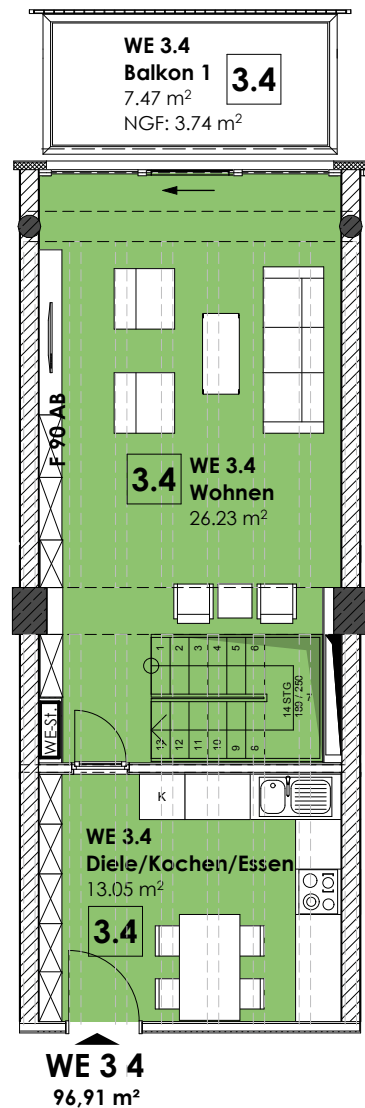


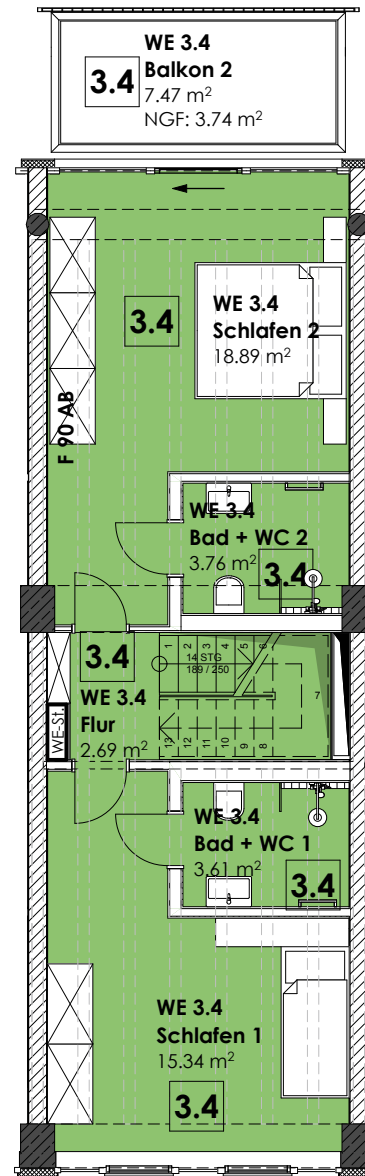
HAUS Zudar, Aufgang 4
Wohnung 3.4 | 2.OG + 3.OG



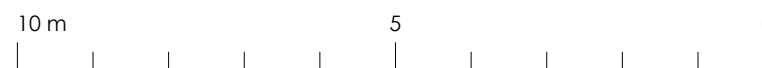

WE 3.4
2.OG + 3.OG
96,91 m²



3.Obergeschoss



2.Obergeschoss



2. OG	
Flur m ²	2,69
Bad + WC 1 m ²	3,61
Bad + WC 2 m ²	3,76
Schlafen 1 m ²	15,34
Schlafen 2 m ²	18,89
Balkon m ² Faktor 0,50 von 3,75 m ²	7,47
3. OG	
Wohnen m ²	26,23
Diele/Kochen/Essen m ²	13,05
Abstellraum 1.OG m ²	5,86
Balkon m ² Faktor 0,50 von 3,75 m ²	7,47