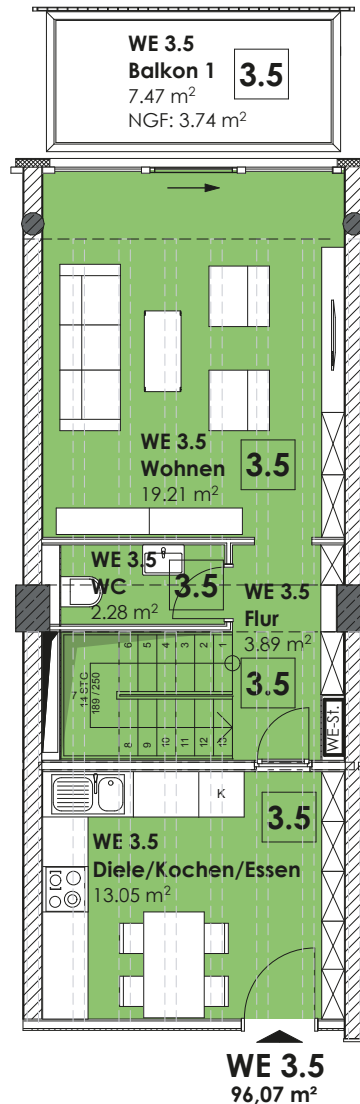
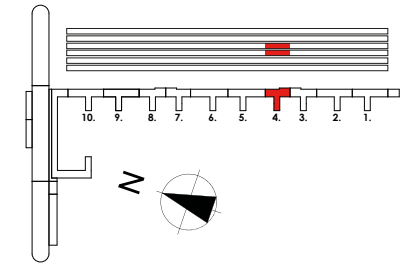
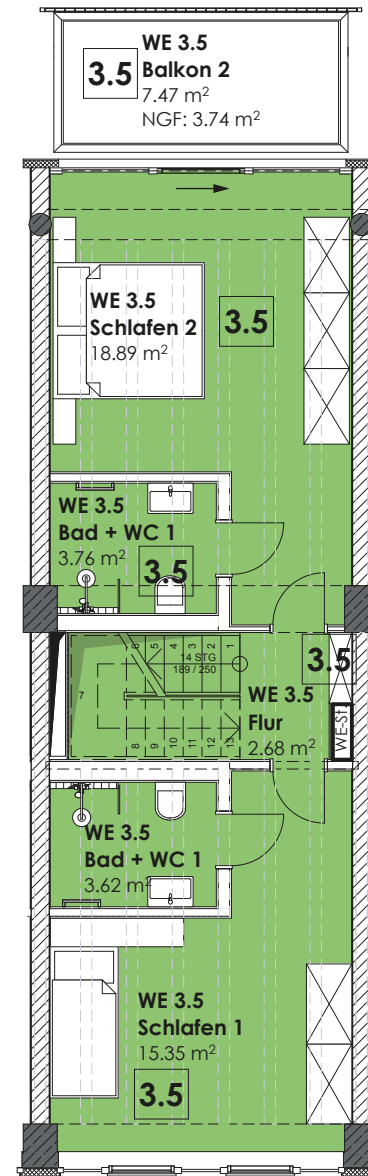


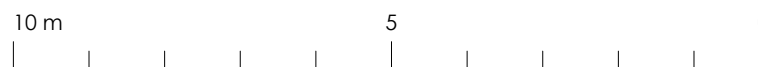
**HAUS Zudar, Aufgang 4**  
**Wohnung 3.5 | 2.OG + 3.OG**



**3.Obergeschoss**



**2.Obergeschoss**




**WE 3.5**  
**2.OG + 3.OG**  
**96,07 m<sup>2</sup>**

<b>2. OG</b>	
Flur m <sup>2</sup>	2,68
Bad + WC 1 m <sup>2</sup>	3,62
Bad + WC 2 m <sup>2</sup>	3,76
Schlafen 1 m <sup>2</sup>	15,35
Schlafen 2 m <sup>2</sup>	18,89
Balkon m <sup>2</sup> Faktor 0,50 von 3,75 m <sup>2</sup>	7,47
<b>3. OG</b>	
Flur m <sup>2</sup>	3,89
WC m <sup>2</sup>	2,28
Wohnen m <sup>2</sup>	19,21
Diele/Kochen/Essen m <sup>2</sup>	13,05
Abstellraum 1.OG m <sup>2</sup>	5,86
Balkon m <sup>2</sup> Faktor 0,50 von 3,75 m <sup>2</sup>	7,47