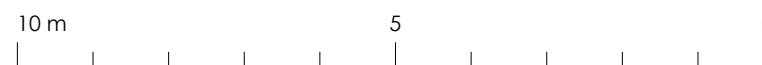
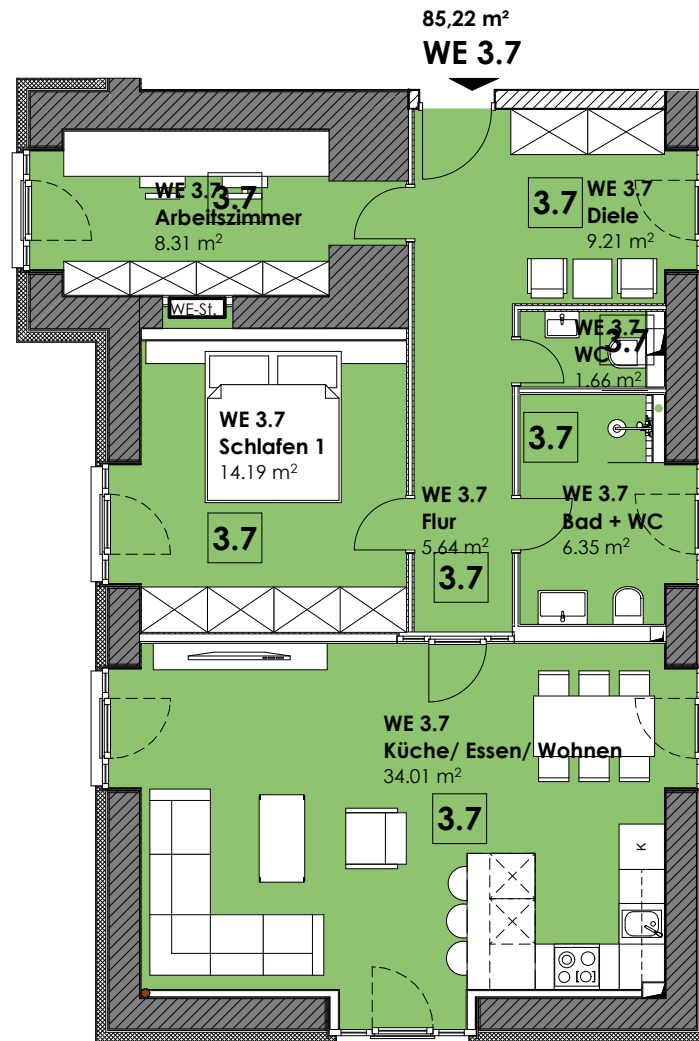
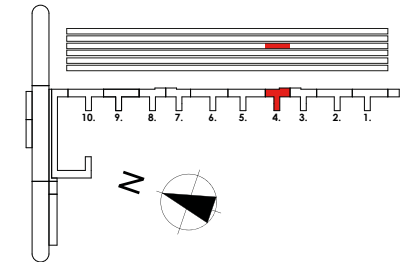


HAUS Zudar, Aufgang 4
Wohnung 3.7 | 3.OG



3. OG	
Arbeitszimmer m ²	8,31
Bad + WC m ²	3,65
Diele m ²	9,21
Flur m ²	5,64
Schlafen m ²	14,19
Küche/Essen/Wohnen m ²	34,01
WC m ²	1,66
Abstellraum 2.OG m ²	5,86