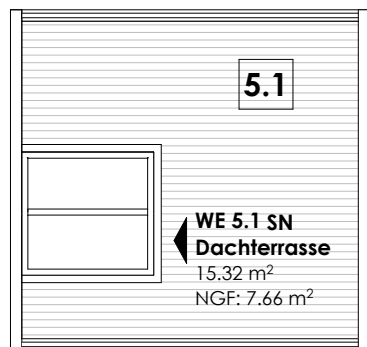
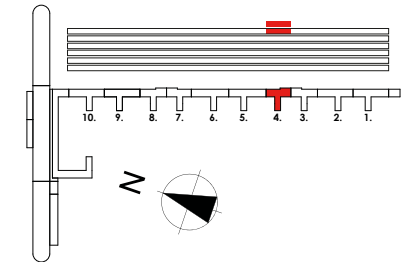
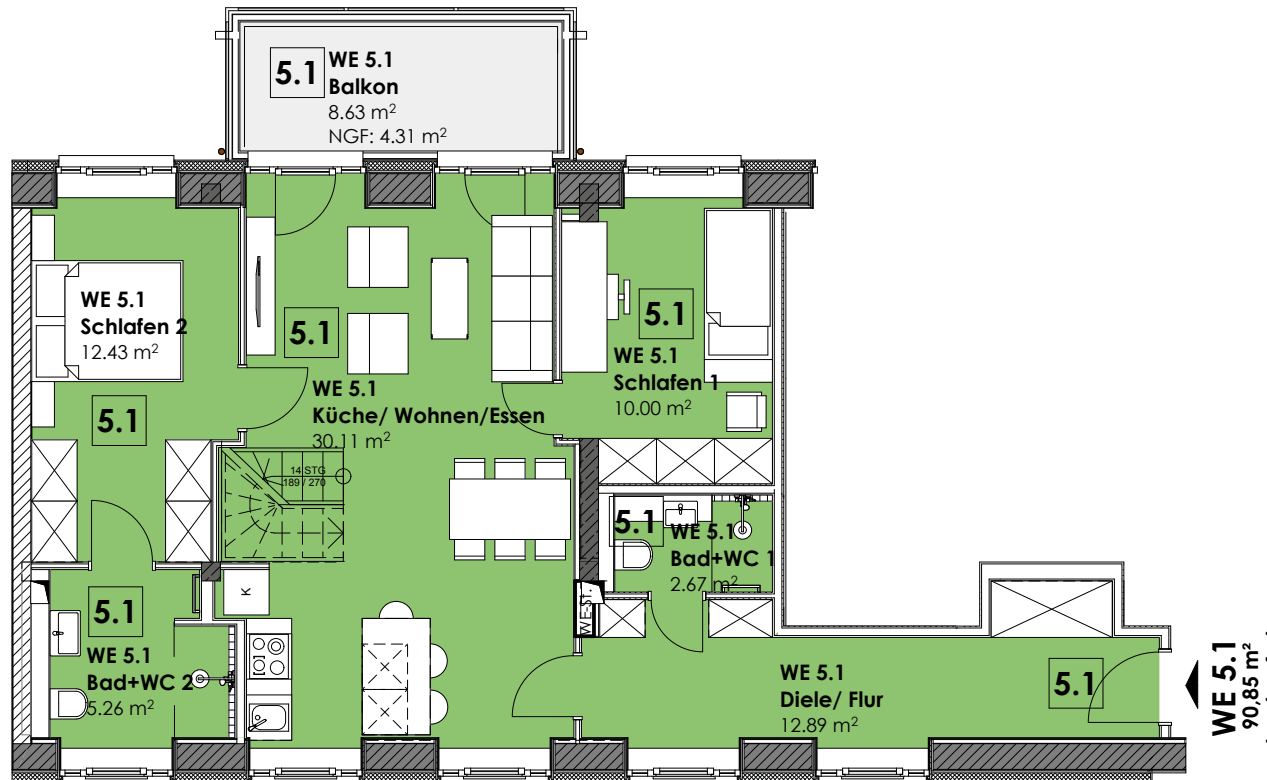


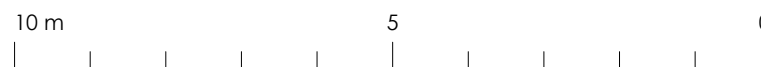
**HAUS Zudar, Aufgang 4**  
**Wohnung 5.1 | 5.OG + DG**



Dachterrasse



5.Obergeschoss



5. OG	
Küche/Wohnen/Essen m <sup>2</sup>	30,11
Bad + WC 1 m <sup>2</sup>	2,67
Bad + WC 2 m <sup>2</sup>	5,26
Diele/Flur m <sup>2</sup>	12,89
Schlafen 1 m <sup>2</sup>	10,00
Schlafen 2 m <sup>2</sup>	12,43
Abstellraum 2.OG m <sup>2</sup>	5,52
Balkon m <sup>2</sup> Faktor 0,50 von 4,23 m <sup>2</sup>	8,63
DG	
Dachterrasse m <sup>2</sup> Faktor 0,50 von 7,66 m <sup>2</sup>	15,32